

# A Network Flow Model for Operational Planning in an Underground Gold Mine

Suliman Emdini Gliwan\* and Kevin Crowe

Faculty of Natural Resources Management, Lake Head University, Thunder Bay, ON P7B 5E1, Canada;  
[semdini@lakeheadu.ca](mailto:semdini@lakeheadu.ca)

## Abstract

*In underground mines, the problem of efficiently scheduling and allocating weekly operations has a major impact on the long-term productivity of the mine. The problem of selecting the optimal locations for operations in an underground gold mine is a complex task. It is not solved by simply selecting the levels with the richest grade because the transportation network for ore in an underground mine has a diverse set of capacity constraints that can frustrate immediate mining of all the richest levels. To solve this scheduling difficulty, we formulated a new mixed-integer network flow model of the problem of weekly allocating mining operations in an underground goldmine such that the total gold mined (in ounces) was maximized subject transportation capacity constraints. The model was applied an underground gold mine in Red Lake, Ontario, Canada. The results were compared to those of a two greedy heuristic models that were designed to represent the decision-making heuristics that are currently used at the mine. It was found that the new model yielded solutions that improved upon the two greedy heuristics by 14.7% and 6.0%, respectively. The results of this research illustrate that the development of this optimization model can support decisions to improve a gold mine's productivity.*

**Keywords:** Gold Mine, Network Flow Model, Operations Research, Underground Mine

## 1.0 Introduction

In underground mines, the problem of scheduling the weekly locations of mining operations has a major impact on the productivity of the entire mining operation (Yun, 1990). The objective of the weekly schedule is to maximize production, but it is difficult to optimize for two reasons. First, the solution (i.e., the optimal locations selected to mine over the next weekly period) is constrained by the feasibility of transporting the mined material from the selected locations, through the capacity-constrained transportation network, to the surface. The transportation network in an underground mine has strict capacity constraints on the mass of material that can move, per

unit time, through many links within its transportation network. These conditions reason this problem is difficult to solve optimally is that commercial software is currently available for such a planning problem in underground gold mines. There is no general-purpose software package that has been designed to represent realistically the diversity of constraints peculiar to the many underground mine types—including underground gold mines. As a result, planners are forced to resort to using 'rules of thumb' to solve this problem.

In underground gold mines in particular, the operational planning problem of scheduling the weekly locations of mining operations, subject to transportation constraints, has, to our knowledge, not been formulated

\*Author for correspondence

as an optimization model at the operational scale of planning. The problem has therefore been solved using 'rules of thumb' (i.e., heuristics) typically executed on a spreadsheet. Finding an optimal rather than a heuristic solution to this problem is important for two reasons. First, the difference between an optimal and a heuristic solution may have major differences in the objective function value of the problem's solution; i.e., the mine's operational productivity, measured in ounces of gold delivered to the surface per day. This is because, in a goldmine, the grade of the gold-ore (measured in g/ton) varies from location to location. In other words, the value of the locations selected for mining can vary greatly because of the variance of grade across space, in an underground gold mine. Hence, if this were, for example, a coalmine (e.g., Brzychczy 2014), the difference between a heuristic and an optimal solution to this problem may not be great, because the value of the grades at a selected location differ less significantly than in a gold mine. Since this is a gold mine, the value of the optimal feasible solution is highly sensitive to slight differences in the locations selected for mining. Therefore, the difference between an optimal and a heuristic solution to this problem may be quite important economically.

A second reason for the importance of using an optimization model on this problem is that the above-ground processing facilities are constrained, in their daily productivity, by the value of the gold-ore that is delivered to the surface each day. Since the value of the gold ore delivered to the surface each day is the objective function of this operational problem's optimization model, the solution to this problem has a direct impact on the productivity of the above-ground processing facilities.

In other words, the solution to this problem, when seen in a broader context, can be seen to act as a constraint on the economic productivity of the entire mining facility itself. The objective of this chapter is to formulate and evaluate a new operational planning model for the underground gold mining problem of scheduling the weekly and optimal location of mining operations, subject to transportation constraints on the flow of material. The formulation will be of a mixed-integer, network-flow model. This model will be applied to a case study at the Red Lake Gold Mine in Ontario, Canada. The model will be evaluated by comparing its solution to that of a greedy heuristic currently used. In this way, we will evaluate a larger question: whether the benefit of using a specific operational planning model, for constraint peculiar to underground gold mine, is of any economic consequence.

The outline of this chapter is as follows: first, a Literature Review is presented; second, the formulation of the new model and the heuristic algorithm are presented in the Methods; third, the Case Study, Red Lake Gold Mine, is described; fourth, the Results are presented, in which the optimal solution is compared to the heuristic solution; and finally, a Discussion of the chapter's results and their significance is evaluated.

## 2.0 Literature Review

Literature reviews on the use of operations research in mining in general (e.g., Newman *et al.*, 2010; Bjorndall *et al.*, 2011; Kozan and Liu, 2011), and below ground mining in particular (Alford *et al.*, 2007), indicate that: while there is a wealth of research in the development of optimization models for strategic and tactical problems in mining, published work on scheduling models used at the operational scale have been much more scarce. The literature to be reviewed on this problem is therefore brief and shows a great diversity of models formulated for operational production planning. For this reason, the review is presented chronologically, not thematically.

Nehring, Topal, and Knights (2010) developed a model for a sub-level stoping mine, which was used to solve the problem of scheduling and allocating machines for the transportation of extracted ore from the draw-points, *via* intermediate storage, to a haulage shaft. The model also included decisions on a second-stage movement of ore; *i.e.*, *transporting* ore from an ore-pass to a crusher. The problem was formulated as a Mixed Integer Programming (MIP) model to allocate machines to different draw-points, on a shift basis, over a period of 2 months. The objective function of the model was to minimize the deviation from production targets subject to constraints on machines and crew. The model's solutions were evaluated on an imulated mine.

Martinez and Newman (2010) developed a comprehensive operational scheduling and allocation model for an iron ore mine in Northern Sweden. The model minimized deviations from monthly production targets subject to a host of operational constraints, many of which were peculiar to sub-level caving. The MIP model was solved on a real-world dataset, using a heuristic algorithm, to within 5% of production targets.

Howes and Forrest (2012) described an approach to improving operational decision-making at a mine in Bulgaria. A key strategy introduced in this work was short interval control. This involves the use of real-time

production information to provide a central monitoring and control room with the real-time status of all tasks in the mine. This comprehensive communications infrastructure was designed to support key front line decision-making on operational resource allocation achieves the maximum efficiency for each shift. At present, the decisions are made by management in the central control room, but the development of operations research models to support management decisions in this environment is then a next step in the evolution of this ambitious project, and therefore a fruitful field of future research on operational scheduling in mining.

Little, Knights, and Topal (2013) evaluated the advantage of simultaneously integrating decisions on both stope layout and production scheduling into one model. They found that the solutions generated by the integrated model were superior to those using different models sequentially. The benefits of integrating separate but interdependent models, as demonstrated by these authors, are promising.

Schulze *et al.* (2016) scheduled a mobile production fleet in an underground, room-and-pillar, potash mine. The objective of the model was to minimize the make-span, i.e., to create the shortest logical project schedule, by efficiently using project resources and adding the lowest number of additional resources to each sub-task. The problem was formulated as an MIP model and solved using a commercial solver. The authors continued to explore the room and pillar-scheduling problem by developing a heuristic solution method in Schulze and Zimmermann (2017).

Campeau and Gamache (2019) present an optimization model for short-term scheduling of excavation, hauling, and back filling activities at a cut-and-fill gold mine in Canada. The objective function was to maximize total discounted tonnage extracted over an eighteen week planning horizon, subject to resource and sequencing constraints. The authors observe that the real value of their solutions rests heavily on the quality of the tactical plan's selected sequence of blocks, on which their model acts.

From this review of the literature, one can draw two observations. First, that the problems modeled for operational planning in underground mines are not generic but quite diverse and specific to mine types. The models formulated were often custom-built for the particular extraction method of the mine and its design. It is perhaps for this reason that there exists no commercial optimization software that is universally employable for operational scheduling in all underground mines, as there is for tactical planning of underground mines (Newman 2010). A second observation that can be drawn

from the literature review is that the particular problem addressed in this paper (i.e., the optimal operational-scale scheduling of gold ore and waste flow, in an underground gold mine) has not been addressed with in prior research.

### 3.0 Methods

The Methods are divided into 4 parts. First, a description of the problem, with a conceptual figure, is given; second, the mathematical formulation of the optimization model is presented; third, the heuristic algorithm used in this paper, to present the current decision-making procedure at the mine, is given. Finally, the case study and data used are described.

### 4.0 Description of Modeled Problem

A conceptual figure of the problem is presented in Figure 1. Here we observe a simplified representation of an underground gold mine. First, observe that there are 9 levels. Each level may have a different: i) grade of ore (g/ton); ii) mass of ore that may be removed daily (tonne/day); and iii) mass of waste that must be removed if ore is removed (tonne/day). Second, observe that there are two types of shafts for downward movement of mined material: ore and waste shafts.

There are no capacity constraints on these shafts. Third, observe that, at the bottom each shaft, horizontal transportation of both materials occurs.

This horizontal transportation has a daily capacity constraint. Fourth, observe that, at the end of the network, there is a capacity-constrained elevator to the surface where there is a daily demand for ore and a daily demand for the mass of waste resulting from the mining of the ore. Hence, the problem may be summarized as: select a set of levels for daily operation such that the mass of gold removed (in ounces) is maximized, subject to: i) capacity constraints on ore transportation; ii) daily ore targets at the above-ground processing facility is met; and iii) the waste material accompanying ore removal is removed. The problem is formulated as a network flow model where each level is a supply node and the elevator is the demand node. Constraints on the flow of material occur at transition nodes. Unless these transportation capacity constraints are used in planning, the movement of both ore and waste through the mine could be stopped during a shift because a transportation corridor may become backed-up from crews trying to move too much

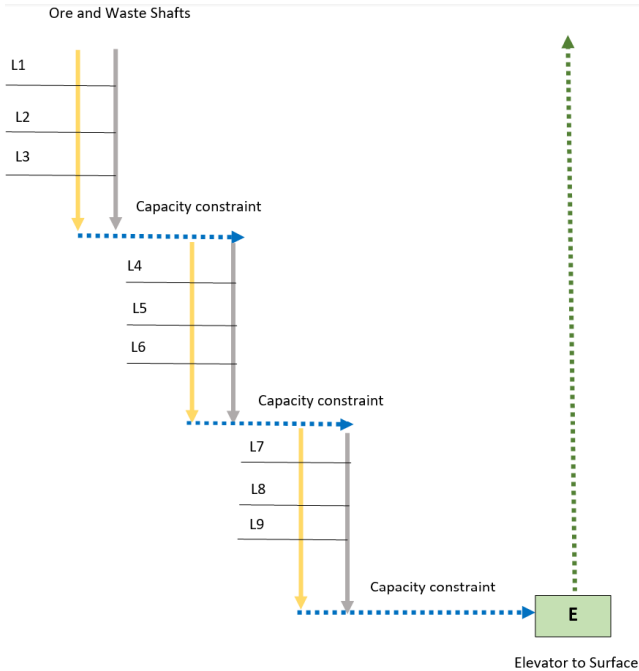


Figure 1. Conceptual figure of the modeled problem.

ore through a corridor, with too little capacity for such a quantity, with in the planned period. In addition, the selection of a level must be represented by a binary decision variable because, if real numbers were used, a solution with tiny, fractional mining of levels could occur. This is not feasible in practice because the fractions might be very small and therefore a solution could be produced where it is not worth ending machines and a crew to mine a level with a tiny, fractional amount of ore. Finally, the daily schedule of production is to be found for a planning horizon of 7 days.

This problem is difficult to solve, for it is a combinatorial optimization problem that maybe reduced to the famous knap sack problem. In the knap sack problem, one is given a set of items, each with a weight and a value, and one must select a set of items to include in a knap sack such that; i) the total weight is less than or equal to a given limit; and ii) the total value of the contents of the knap sack is as large as possible (Salkin and Kluyver 1975). The operational mining problem described above can be reduced to the knap sack problem because, apart from the transportation constraints, the problem is the same; that is, selecting a set of levels so that the total mass of ore selected is less than or equal to the limit set by the elevator's capacity and the objective is that the total value of the gold (in ounces) from the levels selected for mining be as valuable as possible.

## 5.0 Formulation of the New Model

The mathematical formulation of the model is presented below.

### Indices and Sets

$n, N$  = index and set of levels in the mine.

$t, T$  = index and set of planning periods.

$m, M$  = index and set of materials moved through the network (i.e., ore or waste material).

$i, j, J$  = index and set of nodes in the network.

$B$  = set of intermediate (transshipment) nodes.

$C$  = set of arcs with capacity constraints.

$D_{ij}$  = capacity on arc  $i$ - $j$  (tons per day).

$O_n$  = set of arcs flowing out from node on level  $n$ .

$I_n$  = set of arcs flowing into node on level  $n$ .

$F$  = the set of terminal arcs in the network (a set of 1).

### Parameters

$s_{mn}$  = mass of material type,  $m$ , available for removal at level  $n$  of the mine (tons).

$g_n$  = estimated mass of gold ore available at level  $n$  of the mine (grams).

### Decision Variables

$y_{nt}$  = 1 if material is removed from level  $n$  in period  $t$ , 0 otherwise.

$x_{ijmt}$  = flow of material,  $m$ , through arc  $i$ - $j$ , in period  $t$  (tons).

### Objective Function:

Maximize total mass of gold removed (in grams) over all periods

$$\sum_{n \in N} \sum_{t \in T} y_{nt} g_n \quad [1]$$

### Subject to:

Mine each level not more than once.

$$\sum_{t \in T} y_{nt} \leq 1 \quad \text{for each } n \in N \quad [2]$$

If a level is mined, it is a source of ore and waste material flow.

$$\sum_{(i,j) \in O_n} x_{ijmt} = \sum_{(i,j) \in I_n} x_{ijmt} = y_{nt} s_{mn} \quad \text{for each } n \in N, m \in M, t \in T \quad [3]$$

### Transition nodes defined.

$$\sum_{(i,j) \in O_n} x_{ijmt} = \sum_{(i,j) \in I_n} x_{ijmt} = 0 \quad \text{for each } n \in N, m \in M, t \in T \quad [4]$$

### Terminal node defined.

$$\sum_{(i,j) \in F} x_{ijmt} = \sum_{(i,j) \in F} x_{ijmt} = \sum_{n \in N} y_{nt} s_{mn} \quad \text{for each } m \in M, t \in T \quad [5]$$

### Capacity constraints.



$$\sum_{m \in M} x_{ijmt} \leq D_{ij} \quad \text{for each } ij \in C, t \in T \quad [6]$$

Binary and non-negativity constraints.

$$y_{nt} \in \{0,1\} \quad \text{for each } n \in N, t \in T \quad [7]$$

$$x_{ijmt} \geq 0 \quad \text{for each } ij \in J, m \in M, t \in T \quad [8]$$

The objective function [1] of the model is to maximize the total mass of gold removed (in ounces) during the daily shift. The mass of gold is based on the tactical plan's estimated grade at each level (measured in grams per tonne) and the total mass of gold ore and waste (measured in tonnes) that is currently available to be mined at each level. The first constraint [2] ensures that no level may be mined more than once over the planning horizon. The second constraint [3] defines the potential sources of flow through the network. This constraint ensures that, if a given level,  $n$ , is mined in period  $t$ , then each material type,  $m$ , will flow out of the node on this level and into the network. Note that the flow of each material type (ore and waste) is tracked separately from each source.

Constraint [4] is a standard flow balance equation for transition nodes in a network model. Equation [5] defines the terminal node and the mass of each material type demanded at the terminal node. Note that the total mass of each material type refers to the total mass of each material type that was mined during each period. There is an upper bound on this value implicit in the capacity constraint on the arc connected to the terminal node. Equation [6] defines the capacity constraints on the flow of material types imposed on these to arcs with Capacity constraints. Equation [7] ensures that the decision variable,  $y_{nt}$ , is binary. This variable is binary for two reasons. First, the mass of material removed from each level must be discrete; otherwise, the model might produce solutions that are operationally infeasible (e.g., tiny masses of material to be scheduled for removal from a level). Second, the binary decision variable is needed to trigger the flow in equation [3]. Equation [8] ensures that a negative flow value is not possible.

## 6.0 Description of Heuristic Algorithm

Given the absence of an optimization model to solve this operational problem, our Industrial partner had been using a heuristic method (i.e., rules of thumb). This method will now be described, for its results will be compared with the results of the new optimization model in order to evaluate the latter. Given that the objective function of the model is maximize

the gold ounces removed over The planning horizon, subject to capacity constraints, a greedy search was used. A greedy search Heuristic has been used quite successfully on many versions of the knap sack model (Ackay *et al.*, 2007). In this greedy search, the levels were sorted from highest to lowest grade, and selection proceeds from highest to lowest, subject to capacity constraints. An algorithmic flow chart of the Greedy search is presented in Figure 2. Here, the search is repeated each of the 7 days, and all candidate levels are rendered eligible at the beginning of the search.

In the greedy heuristic described above, there is a demand limit on two types of materials mined: Gold ore and waste. In addition, a second heuristic is used in the paper, called heuristic 2. Heuristic 2 places a demand limit only on the ore and allows the mass of waste to exceed its target. Heuristic 2, therefore, allows for greater opportunity to maximize the value of the objective function while running the risk of mining as light excess of waste. Heuristic 2 is sometimes used by the planners at Red Lake. Hence, the trade-off involved in using heuristic 1 versus heuristic 2 is a practical one for decision makers to explore and use. In this paper, both heuristic 1 and

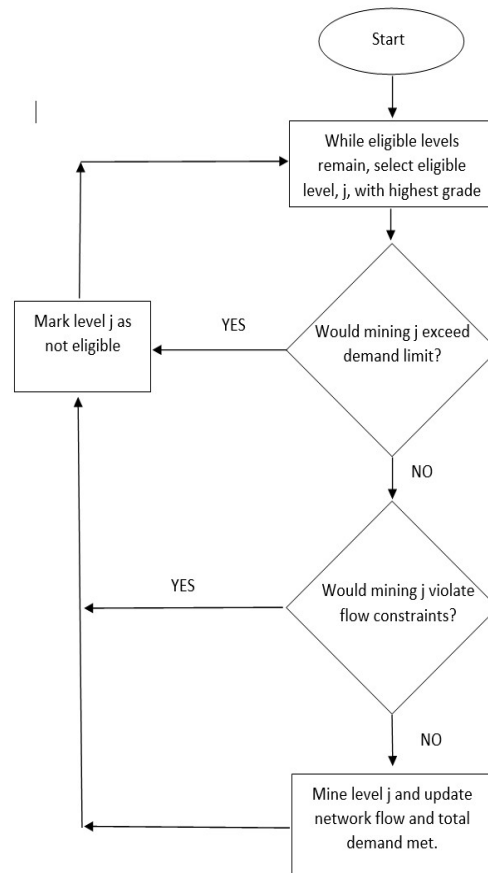


Figure 2. Algorithmic flow chart of greedy heuristic.

heuristic 2 are used and their results are presented and compared with the results of the new optimization model.

### 7.0 Description of Case Study

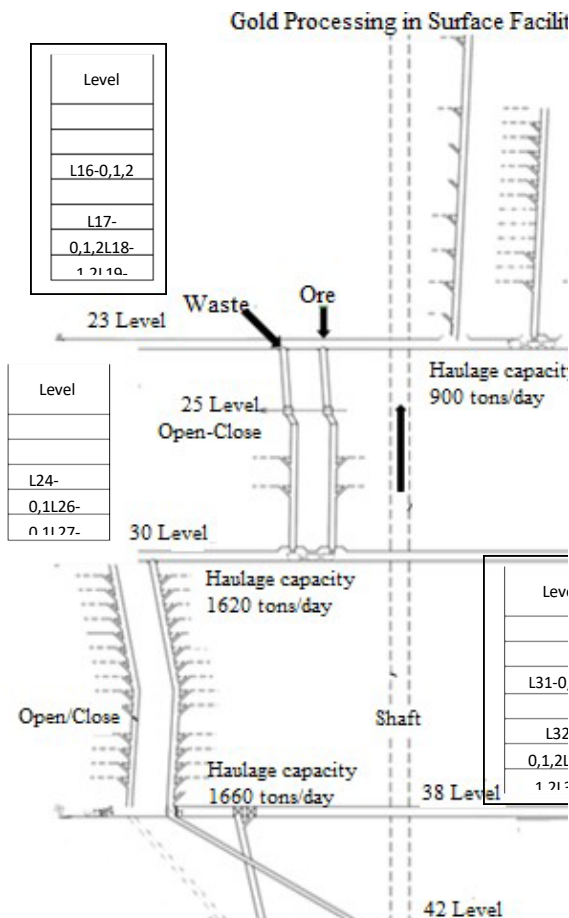
The case study is the Red Lake underground gold mine, located in Red Lake, Ontario, Canada. The mine is approximately 50 years old and is currently under the management of Newmont-Goldcorp Corporation, our industrial partner. The levels of production are shown in Figure 3. Each level contains discrete masses of both ore and waste material. The mass of each block, in each level ranges from 3,500–5,000 ton. Each block has been scheduled, in the tactical plan, forming with in the calendar-year. The objective of this model is to transform the annual tactical plan into an optimal weekly operational plan of production. There are 19 levels currently eligible for production, based on the tactical plan. The levels scheduled for tactical operation at the Red Lake gold mine are presented in Figure 3. First, observe that there are three sets of levels. Second, observe that, at the bottom

**Table 1.** Ore and waste values at each level of the case study

Level	Gold Ore (tonnes/day)	Grade (g/tonne)	Gold (ounces/day)	Waste (tonnes/day)
16	174	7.1	43.7	120
17	291	5.6	57.4	126
18	208	10.0	73.4	142
19	318	11.7	130.9	155
20	258	10.6	96.3	134
21	291	14.1	145.3	133
22	277	11.3	110.5	145
24	168	6.5	38.9	112
26	259	8.9	81.6	119
27	215	11.6	87.6	201
28	251	9.9	87.5	152
29	264	13.7	127.3	187
31	226	8.5	67.5	111
32	171	9.0	54.6	86
33	205	9.7	70.2	129
34	245	13.2	114.3	116
35	185	5.6	36.4	179
36	179	6.3	40.1	83
37	260	5.4	49.4	184

of the ore and waste shaft so each level, horizontal transportation of material is required, and there is a daily haulage capacity constraint on this. Third, observe that, at the bottom of the mine, there is an elevator to the surface with a daily capacity of 3,000 tonne/day. The daily demand at the surface is for 2,000 ton of gold ore and 1,000 ton of waste to be sent to the surface daily.

Each block at each level at Red Lake differs by: i) the grade of the ore(g/ton); ii) the mass of ore that can be removed in one day (tonne/day); and iii) the mass of waste that must be removed in one day (tonne/day), if ore is removed. The values for these parameters are presented in Table 1. It should be noted that parameters in Table 1 for the grade of ore are not real. Our industrial partner, understandably, wished to keep these values on grade private. The parameters for the grade of ore were therefore generated using a random number generator such that each level was randomly assigned (with equal probability) a grade between 5 and 15 grams of gold per tonne of ore. This range of grades is realistic for a typical gold mine; and the fact that the values as signed are not real does not compromise the evaluation of our optimization model.



**Figure 3.** Underground mine at Red Lake, Ontario, Canada.

### 8.0 Results

The objective function values resulting from the application of the optimization and greedy heuristic models to the case study are presented in Table 2.

**Table 2.** Results of the optimization and greedy heuristic models compared

	Gold (ounces/day)	Ore (tonnes/day)	Waste (tonnes/day)	Total (tonnes/day)
Optimization Model	774.8	1,993	993	2,986
Greedy Heuristic 1	675.6	1,292	921	2,213
Greedy Heuristic 2	731.1	1,708	1,007	2,715

Table 2 yields several observations. First, the objective function (i.e., maximize gold ounces Mined per day) of the optimization model is greater than the objective functions of both greedy heuristics: it is 14.7% higher than greedy heuristic 1 and 6.0% higher than greedy heuristic 2.

These results indicate the benefit of formulating and using an optimization model for solving this Problem *versus* using the current greedy heuristic. Second, Table 2 also shows that greedy heuristic 2 achieved a higher objective function than greedy heuristic 1 by exceeding its waste Limit (of 1,000 tonne/day) by 7 tons per day; and that, even after exceeding its waste limit, the Objective function of greedy heuristic 2 was 6% lower than that of the optimization model. These Results therefore show that the value of a solution to this problem depends not only on the optimal Removal of gold ore alone; but also, on the optimal removal of ore and waste simultaneously.

Third, Table 2 also shows that the solution of the optimization model came closest to maximizing the capacity of network's final node (i.e., 3,000 tonne/day capacity of the elevator carrying material to the surface). This can be seen by the values under the total tonne removed per day where the Optimization model's solution used 96.5% of the capacity, while greedy heuristic 1 used only 73.8% and greedy heuristic 2 used 90.3%.

These differences in capacities used shows the importance, in this problem, of packing the elevator to the surface as closely to its capacity as is possible by using an optimization model based on the knap sack model. The solutions of the optimization model and greedy heuristics are presented in Table 3.

Table 3 presents the locations of the levels selected for mining in each day. Note that the selected locations did not change over the days of scheduling because of their great magnitude (in tonnes) relative to magnitude (in tonnes) of material removed daily. Table 3 yields 3 observations worthy of note. First, one can observe the

effect of the first flow constraint (between levels 29 and 31 as shown in Figure 3), of 1, 800 tons of total material flow per day, on the three different solutions. The solution of the optimization model moved 1, 606 tonnes of material and 491 ounces of gold from level 29 to 31; and the solution of the greedy heuristic moved 1, 689 tonnes of material and 468 ounces of gold. Hence, the capacities between levels 29 and 31 was more closely met by the greedy heuristic than by the optimization model. This difference indicates that the optimal solution does not need to maximize the flow of material or gold through this capacity constraint (between levels 29 and 31) a sit does through the final capacity constraint (after level 37).

**Table 3.** The solutions of the optimization model and greedy heuristics

Level	Optimization Model	Greedy Heuristic 1	Greedy Heuristic 2	Grade (g/ton)
16				7.1
17				5.6
18	x	x	x	10.0
19				11.7
20				10.6
21	x	x	x	14.1
22	x			11.3
24				6.5
26				8.9
27		x	x	11.6
28	x			9.9
29		x	x	13.7
31	x		x	8.5
32	x			9.0
33	x	x	x	9.7
34				13.2
35				5.6
36	x	x	x	6.3
37				5.4

Hence, In this model of the problem, the final capacity constraintal one functions as a knap sack constraint, i.e., a constraint by which as much gold as possible must flow subject to a capacity limit on total flow of material (tonnes/day).

Second, Table 3 shows that the optimal solution contains levels of a lower grade of ore than the solutions of the greedy heuristics. The average grade of ore for the levels selected in the optimalis 10.8 g/ tonne; while the

average grade per level for the solutions of greedy 1 and greedy 2 were 12.3 and 11.9g/ ton, respectively. The lower grade selected in the optimal solution was facilitated by more closely packing the total material capacity constraint of 3,000 tons/day, thus enabling the movement of more material and therefore more total gold per day than the greedy heuristics. Hence, the results in Table 3 illustrate how the optimal solution represents a more successful resolution of the trade-off implicit in this problem; viz., the problem of packing as much gold as possible into the terminal node of the network subject to capacity constraints in the transportation network.

Third, from Table 3 one can observe that the optimal solution included more levels to operate on than the heuristic solutions. The optimal solution contained 8 levels, while the solutions of greedy heuristic 1 and 2 contained 6 and 7 levels, respectively. The extra level of operation contained in the optimal solution entails a higher operational cost and the decision-maker must evaluate whether the additional cost of operations is worth the additional flow of gold accompanying this solution. In this case, the trade-off between the optimal solution and the solutions of heuristic 1 and 2 implies that: an increasing old moved to the surface, by 14.7%, requires an extra 2 levels of operation compared to heuristic 1; and an increasing old mined, by 6.0%, requires an extra one level operation compared to heuristic 2 (which area 1 so has excess waste mined).

## 9.0 Discussion

From the results, we find several points deserving discussion: first, the merit of the greedy heuristic used in this paper; second, First, an evaluation of the greedy heuristic *versus* the optimization model is required. To do this, it should first be noted that a greedy heuristic has been used, for many decades, to solve multiple versions of the knap sack model (Pisinger, 1999) and has produced useful results (Akçay *et al.*, 2007). In other words, by using the greedy heuristic method to provide results with which to compare and evaluate our optimization model, we have not selected a weak and in significant method. Greedy heuristics have been used, in practice, to solve large instances of the knap sack problem (Ferdosian, 2016). The operational mine-level scheduling problem modeled in this paper is not likely ever to have a problem instance so large that it will require a greedy heuristic to solve it. This is because the binary decision variable, used in this model, represents a mine's level; and there

would need to be in excess of 5,000 mine levels for a problem instance to be computationally infeasible for an optimization model which is NP-hard. Hence, it unlikely that the benefits of using an optimization model instead of a greedy heuristic, to solve the model in this paper, will ever become computationally infeasible.

Second, it should be observed that the results illustrate two practical benefits of using the optimization model instead of the greedy heuristic. The first benefit is the increased value of the objective function. The objective function of the optimization model was 14.7% and 6.0% higher than the objective function of greedy heuristics 1 and 2, respectively. The practical benefit of this is an increase in the mine's economic productivity. The second benefit is an improved scheduling of waste removal. The results produced by the greedy heuristics show the awkward predicament that arises when a greedy heuristic is used to schedule the removal of both ore and waste; i.e., either under utilization or over utilization of the mine's transportation capacity occurs, when compared to the solution for the optimization model. For example, Table 2 shows that heuristic 1 under utilized the mine's transportation capacity because it was forced to stop adding levels to be mined when the waste to be moved reached 921 tonnes (i.e., 92% capacity) and this meant that total material (i.e., ore + waste) to be moved reached only 2, 213 tonnes (i.e., 74% of capacity). Table 2 also shows that, for heuristic 2, the mine's capacity to remove waste was slightly exceeded. In practice, the excess waste is placed in temporary underground storage and when the capacity of this underground storage is exceeded, then the scheduled flow of ore through the system must be interrupted so that the excess waste can be removed.

These intermittent interruptions of the movement of ore to the surface have the effect of intermittently under-utilizing the ore-processing facilities at the surface of the mine. Hence, an additional practical advantage of using the optimization model is not only that it maximizes the mine's capacity to move material, but that it does so without intermittent interruptions caused by the stock piles of waste. Finally, the results illustrate the benefits of developing an operational-scale model for an underground mine. The reason operational-scale optimization models have not been widely used in the underground mining industry is because operational problems in underground mines are less generic than tactical models. That is, different types of mines have constraints or objectives that are peculiar to that mine type, and an optimization model would therefore need



to be tailor-made for that type of mine in order to plan for operations. As a result, but the development and use of operational-scale models not been broadly used and heuristic approaches have been relied upon to generate solutions (Chowdu *et al.*, 2021). The results in this paper illustrate the scale of the economic benefits that can be gained by developing and using an operational scale model versus the heuristics.

## 10.0 Conclusion

In this study, a new formulation of an optimization model was developed and evaluated for solving the problem of scheduling weekly levels of operations in an underground gold mine. The results illustrate that an increase in productivity between 6% and 14.7% resulted from using the optimization model versus the currently used heuristic method. These results indicate that the development of new optimization models for underground mining problems can be a field of study with important economic consequences.

## 11.0 References

1. Yun, Q. X., Liu, J. X., Chen, Y. F., & Huang, G. Q. (1990). Optimization of planning and design in underground mines. *Proceedings of 22<sup>nd</sup> Internet, Application of Computers and Operations Research in the Mineral Industry (APCOM)*. University Berlin; p. 255.
2. Brzychczy, E. (2014). A modern tool for modelling and optimization of production in underground coal mine. In *eScience on Distributed Computing Infrastructure* (pp. 317-334). Springer, Cham. [https://doi.org/10.1007/978-3-319-10894-0\\_23](https://doi.org/10.1007/978-3-319-10894-0_23)
3. Newman, A.M., Rubio, E., Caro, R., Weintraub, A., & Eurek K. (2010). A review of operations research in mine planning. *Interfaces*. 40(3), 222–245. <https://doi.org/10.1287/inte.1090.0492>
4. Kozan, E., & Liu, S.Q. (2011). Operations research for mining: a classification and literature review. *ASOR Bulletin*, 30(1), 2–23.
5. Alford, C., Brazil, M., & Lee, D.H. (2007). Optimization in underground mining. In *Handbook of operations research in natural resources*. Springer, Boston, MA.
6. Nehring, M., Topal, E., & Knights, P. (2010). Dynamic short-term production scheduling and machine allocation in underground mining using mathematical programming. *Mining Technology*, 119(4), 212–220. <https://doi.org/10.1179/1743286310Y.0000000001>
7. Martinez, M.A., & Newman, A.M. (2011). A solution approach for optimizing long-and short-term production scheduling at LKAB's Kiruna mine. *European Journal of Operational Research*, 211(1), 184–197. <https://doi.org/10.1016/j.ejor.2010.12.008>
8. Howes, R., & Forrest, C. (2012). Short Interval Control in Today's Underground Mine: A Case Study. Presentation in MINExpo International, Las Vegas.
9. Little, J., Knights, P., & Topal, E. (2013). Integrated optimization of underground mine design and scheduling. *Journal of the Southern African Institute of Mining and Metallurgy*, 113(10), 775–785.
10. Schulze, M., Rieck, J., Seifi, C., & Zimmerman, J. (2016). Machine scheduling in underground mining: an application in the potash industry. *OR Spectrum*, 38, 365–403. <https://doi.org/10.1007/s00291-015-0414-y>
11. Schulze, M., Zimmerman, J. (2017). Staff and machine shift scheduling in a German potash mine. *Journal of Scheduling*, 20(6), 635–656. <https://doi.org/10.1007/s10951-017-0527-z>
12. Campeau, L. P., & Gamache, M. (2019). Short-Term planning optimization model for underground mines. *Computers & Operations Research*. 2019. <https://doi.org/10.1016/j.cor.2019.02.005>
13. Salkin, H. M., & De Kluyver, C. A. (1975). The knapsack problem: a survey. *Naval Research Logistics Quarterly*, 22(1), 127–144. <https://doi.org/10.1002/nav.3800220110>
14. Akçay, Y., Li, H., & Xu, S. H. (2007). Greedy algorithm for the general multidimensional knapsack problem. *Annals of Operations Research*, 150(1), 17–29. <https://doi.org/10.1007/s10479-006-0150-4>
15. Bjørndal, T., Herrero, I., Newman, A., Romero, C., & Weintraub, A. (2012). Operations research in the natural resource industry. *International Transactions in Operational Research*, 19(1), pp.39-62. <https://doi.org/10.1111/j.1475-3995.2011.00800.x>
16. Gregory, C. E. (1980). A concise history of mining (Vol. 1). Pergamon, Oxford university, UK.
17. Magnanti, T.L., & Wong, R.T. (1984). Network design and transportation planning: Models and algorithms. *Transportation Science*, 18(1), 1–55. <https://doi.org/10.1287/trsc.18.1.1>
18. MINCOM. (2010). Annual Survey Report Study: Mining Companies Executive Insights. Mining Industry-North American Denver, CO. p.12.
19. Rubio, E., & Diering, T. (2004). Block cave production planning using operation research tools. In *Proceedings of the 2004 MassMin Conference, Santiago, Chile*; p. 141–149.
20. Rubio, E., Cardu, M., Ciccu, R., Lovera, E., & Michelotti, E. (2006). Mill feed optimization for multiple processing facilities using integer linear programming. *Proceedings of 15<sup>th</sup> Internet Symposia: Mine Planning Equipment Selection (MPES)*; p. 1206-1212.